

Premium 16, 18 and 20 Gauge.  
 304 Surgical Stainless Steel  
 18/10 Chromium/Nickel Content  
 Padded and Sprayed for Sound Absorption and Insulation  
 All Double Bowls Reinforced for a Sag Proof Deck



Denver  
 T-9201  
 31-1/4" x 18" x 9"  
 Accessories: Grids, Strainer



Malibu  
 T-9202  
 31-5/8" x 20 1/2" x 9" 7/8"  
 Accessories: Grids, Strainer



Malibu R  
 T-9202R  
 31-5/8" x 20 1/2" x 9" 7/8"  
 Accessories: Grids, Strainer



Birmingham  
 T-9203  
 31-1/4" x 17" x 9" 7/7"  
 Accessories: Strainer



Manhattan  
 T-9204  
 30-1/8" x 18" x 10"  
 Accessories: Grids, Strainer



Lexington  
 T-9205  
 31-1/4" x 20-1/2" x 9" 7/7"  
 Accessories: Grids, Strainer



Lexington R  
 T-9205 R  
 31-1/4" x 20-1/2" x 9" 7/7"  
 Accessories: Grids, Strainer



Hammond  
 T-9206  
 31" x 18" x 10" 10/10"  
 Accessories: Strainer



Bristol  
 T-9207  
 46-1/2" x 20-5/8" x 9" 7/7" 9/9"  
 Accessories: Strainer



Oxmoor  
 TH-1201  
 32" x 19" x 10" 10/10"  
 Accessories: Strainer



Sonoma  
 TH-1202  
 32" x 19" x 10" 10/10"  
 Accessories: Strainer



Kenner  
 TH-1202  
 32" x 19" x 10"  
 Accessories: Strainer



Hampton  
 TH-1203  
 30" x 20" x 10"  
 Accessories: Strainer



Florence  
 TH-1205  
 33" x 20" x 10" 10/10"  
 Accessories: Strainer



Cahaba  
 TH-1206  
 17" x 18" x 10"  
 Accessories: Strainer



Montrose  
 T-7201  
 33" x 22" x 8"  
 Accessories: Grids, Strainer



Claymont  
 T-7202  
 33" x 22" x 9" 7/8"  
 Accessories: Grids, Strainer



Camden  
 T-7203  
 25" x 22" x 8"  
 Accessories: Strainer

Premium 16, 18 and 20 Gauge.  
 304 Surgical Stainless Steel  
 18/10 Chromium/Nickel Content  
 Padded and Sprayed for Sound Absorption and Insulation  
 All Double Bowls Reinforced for a Sag Proof Deck



Durham  
T-8201  
16" x 16" x 8"  
Accessories: Strainer



Jackson  
T-8202  
12-1/2" x 18" x 7"  
Accessories: Strainer



Panama  
T-8203  
18" x 16" x 8"  
Accessories: Strainer



Benton  
T-8204  
17-3/4" x 7"  
Accessories: Strainer



San Antonio  
T-8205  
19-3/4" x 20-1/2" x 9"  
Accessories: Strainer



Charleston  
T-8206  
20" x 16" x 8"  
Accessories: Strainer



Lenox  
T-8207  
15-1/8" x 12-3/4" x 7"  
Accessories: Strainer



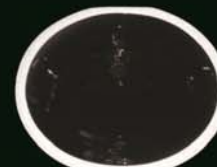
TS-1714  
OD: 19-1/8" x 16-1/8"  
ID: 17" x 14"



TS-1714 White  
OD: 19-1/8" x 16-1/8"  
ID: 17" x 14"



TS-1714 Bone  
OD: 19-1/8" x 16-1/8"  
ID: 17" x 14"



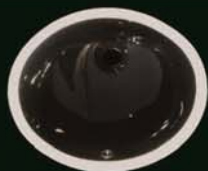
TS-1714 Black  
OD: 19-1/8" x 16-1/8"  
ID: 17" x 14"



T-1512 White  
OD: 17" x 14"  
ID: 15" x 12"



T-1512 Bone  
OD: 17" x 14"  
ID: 15" x 12"



T-1512 Black  
OD: 17" x 14"  
ID: 15" x 12"



T-1912 White  
OD: 21" x 14"



T-1912 Bone  
OD: 21" x 14"  
ID: 19" x 12"



T-1912 Black  
OD: 21" x 14"  
ID: 19" x 12"



T-17R White  
16-5/8" x 5-7/8"  
Pop Up Drain Included



T-17R Bone  
16-5/8" x 5-7/8"  
Pop Up Drain Included



T-17R Black  
16-5/8" x 5-7/8"  
Pop Up Drain Included



T-17S White  
16-3/8" x 16-3/8" 4-3/4"  
Pop Up Drain Included



T-17S Bone  
16-3/8" x 16-3/8" 4-3/4"  
Pop Up Drain Included



T-17S Black  
16-3/8" x 16-3/8" 4-3/4"  
Pop Up Drain Included



Brushed Strainer  
T-SS  
3-1/2"